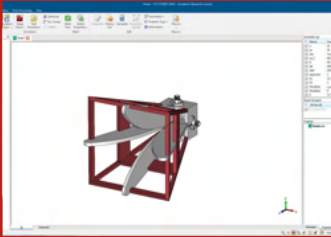
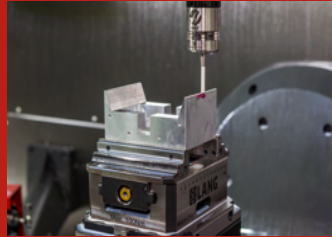


RF SPIN

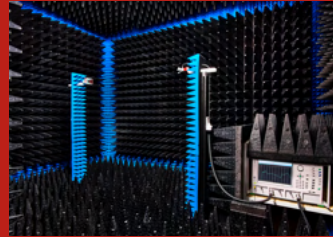
Broadband Antenna Experts



SOFTWARE
SIMULATION



PRECISE
MANUFACTURING



MEASUREMENT OF
EACH ANTENNA



LUXURY
PACKING

www.rfspin.com

2021



SINGLE POLARIZED BROADBAND ANTENNAS



DRH110

14 GHz - 110 GHz
 VSWR < 2.1
 Gain 6.5 - 18.5 dBi
 Power (CW/Peak)
 4 W / 8 W
 1.0 mm female



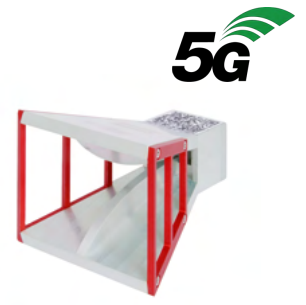
DRH67

6 GHz - 67 GHz
 VSWR < 1.9
 Gain 7 - 21.5 dBi
 Power (CW/Peak)
 5 W / 10 W
 1.85 mm female



DRH50

4.5 GHz - 50 GHz
 VSWR < 1.55
 Gain 6 - 20.5 dBi
 Power (CW/Peak)
 10 W / 20 W
 2.40 mm female



DRH40

4 GHz - 40 GHz
 VSWR < 1.6
 Gain 7 - 19.5 dBi
 Power (CW/Peak)
 15 W / 30 W
 K female



DRH30

2.5 GHz - 30 GHz
 VSWR < 1.55
 Gain 6 - 20 dBi
 Power (CW/Peak)
 25 W / 50 W
 K female



DRH20E

1.6 GHz - 20 GHz
 VSWR < 1.5
 Gain 5 - 17 dBi
 Power (CW/Peak)
 50 W / 100 W
 SMA female



DRH18-E

1 GHz - 18 GHz
 VSWR < 2.2
 Gain 6 - 15 dBi
 Power (CW/Peak)
 100 W / 170 W
 N or SMA female



DRH18-EX

800 MHz - 18 GHz
 VSWR < 2.4
 Gain 2.5 - 15 dBi
 Power (CW/Peak)
 100 W / 170 W
 N or SMA female



DRH10E

700 MHz - 10.5 GHz
 VSWR < 2.5
 Gain 3 - 16 dBi
 Power (CW/Peak)
 150 W / 250 W
 N female



DRH10

740 MHz - 10.5 GHz
 VSWR < 1.8
 Gain 4 - 17 dBi
 Power (CW/Peak)
 150 W / 250 W
 N female



DRH370

370 MHz - 6 GHz
 VSWR < 1.6
 Gain 3.5 - 16 dBi
 Power (CW/Peak)
 350 W / 500 W
 N female



DRH203

200 MHz - 3 GHz
 VSWR < 1.6
 Gain 3 - 16 dBi
 Power (CW/Peak)
 400 W / 750 W
 N female



DRH200

180 MHz - 2.2 GHz
 VSWR < 1.6
 Gain 6 - 14 dBi
 Power (CW/Peak)
 500 W / 1000 W
 N female



TEMH20

1 GHz - 22 GHz
 VSWR < 2.6
 Gain 6 - 22 dBi
 Power (CW/Peak)
 25 W / 50 W
 3.50 mm female

DUAL POLARIZED BROADBAND ANTENNAS



One of a kind, the QRH67, combines maximum frequency with an ultra-wideband for modern RF laboratories which specialize in research and development of new wireless technologies.

QRH67E

6 GHz - 67 GHz
 VSWR < 2.4
 Gain 3 - 14 dBi
 Power (CW/Peak)
 5 W / 10 W
 2 × 1.85 mm female

Applications

EMC, Automotive, Radio Monitoring, Electronics, Government/Defense, Medical, 5G



QRH50E

5 GHz - 50 GHz
 VSWR < 2.5
 Gain 4 - 14 dBi
 Power (CW/Peak)
 5 W / 10 W
 2 × 2.40 mm female



QRH40

4 GHz - 40 GHz
 VSWR < 2.4
 Gain 6 - 16 dBi
 Power (CW/Peak)
 10 W / 20 W
 2 × K female



QRH0140

1 GHz - 40 GHz
 VSWR < 2.4
 Gain 5 - 15.5 dBi
 Power (CW/Peak)
 20 W / 40 W
 2 × SMA female



QRH20E

1.7 GHz - 20 GHz
 VSWR < 2.4
 Gain 5 - 15.5 dBi
 Power (CW/Peak)
 20 W / 40 W
 2 × SMA female



QRH18

1 GHz - 18 GHz
 VSWR < 2.5
 Gain 5 - 16 dBi
 Power (CW/Peak)
 100 W / 170 W
 2 × SMA female



QRH11

730 MHz - 11 GHz
 VSWR < 2.4
 Gain 3 - 15.5 dBi
 Power (CW/Peak)
 100 W / 170 W
 2 × SMA female



QRH400

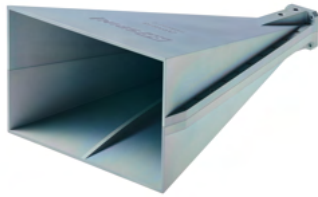
400 MHz - 6 GHz
 VSWR < 2.3
 Gain 4 - 15 dBi
 Power (CW/Peak)
 200 W / 350 W
 2 × N female



QRH300

300 MHz - 4.5 GHz
 VSWR < 2.2
 Gain 2 - 15 dBi
 Power (CW/Peak)
 400 W / 750 W
 2 × N female

DOUBLE RIDGED HORN ANTENNA / WAVEGUIDE ADAPTER



DRH818

7.5 GHz - 18 GHz
 VSWR < 1.18
 Gain 18 - 21 dBi
 1 kW / 2.5 kW
 WRD750



ADRWC750

7.5 GHz - 18 GHz
 VSWR < 1.25
 WRD750
 100 W / 170 W
 N or SMA female

PYRAMIDAL HORN ANTENNAS



H-A33

22 GHz - 33 GHz
 VSWR < 1.3
 Gain 18 - 20 dBi
 25 W / 50 W
 K female



H-A40

26 GHz - 40 GHz
 VSWR < 1.3
 Gain 18 - 21 dBi
 15 W / 30 W
 K female



H-A50

33 GHz - 50 GHz
 VSWR < 1.35
 Gain 19 - 21 dBi
 10 W / 20 W
 2.4 female



WAVEGUIDE ADAPTERS



Part No.	Nominal Gain (dBi)				
	Frequency Range (GHz)	Waveguide Type	VSWR	Flange	Connector
AWC90EFS AWC90EFN	8.2 - 12.4	WR90	<1.25	UG-39/U	SMA N
AWC75EFS AWC75EFN	10 - 15	WR75	<1.25	UBR 120	SMA N
AWC62EFS AWC62EFN	12.4 - 18	WR62	<1.25	UG-1665/U	SMA N
AWC51EFS AWC51EFK	15 - 22	WR51	<1.25	UBR 180	SMA 2.92
AWC42EFK	18 - 26.5	WR42	<1.3	UBR 220	2.92
AWC34EFK	22 - 33	WR34	<1.3	UG-1530/U	2.92
AWC28EFK	26.5 - 40	WR28	<1.3	UG-599/U	2.92
AWC22EFQ	33 - 50	WR22	<1.3	UG-383/U	2.4
AWC19EFV AWC19F	40 - 60	WR19	<1.35	UG-383/U	1.85 1.85 (90° angle)
AWC15EFV AWC15F	50 - 67	WR15	<1.35 <1.4	UG-385/U	1.85 1.85 (90° angle)
AWC15EFW	50 - 75	WR15	<1.3	UG-385/U	1.00
AWC12EFW	60 - 90	WR12	<1.35	UG-387/U	1.00
AWC10EFW	75 - 110	WR10	<1.35	UG-387/U	1.00



STANDARD GAIN HORN

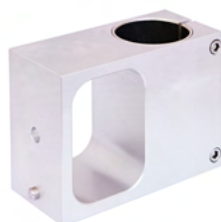


Providing a whole series of standard gain horn antennas from WR90 (8.2 GHz) up to WR8 (140 GHz) with two different surface finishes, Alodine 2040 or gold plated. The standard gain is 10, 15, 20 and 25dB.

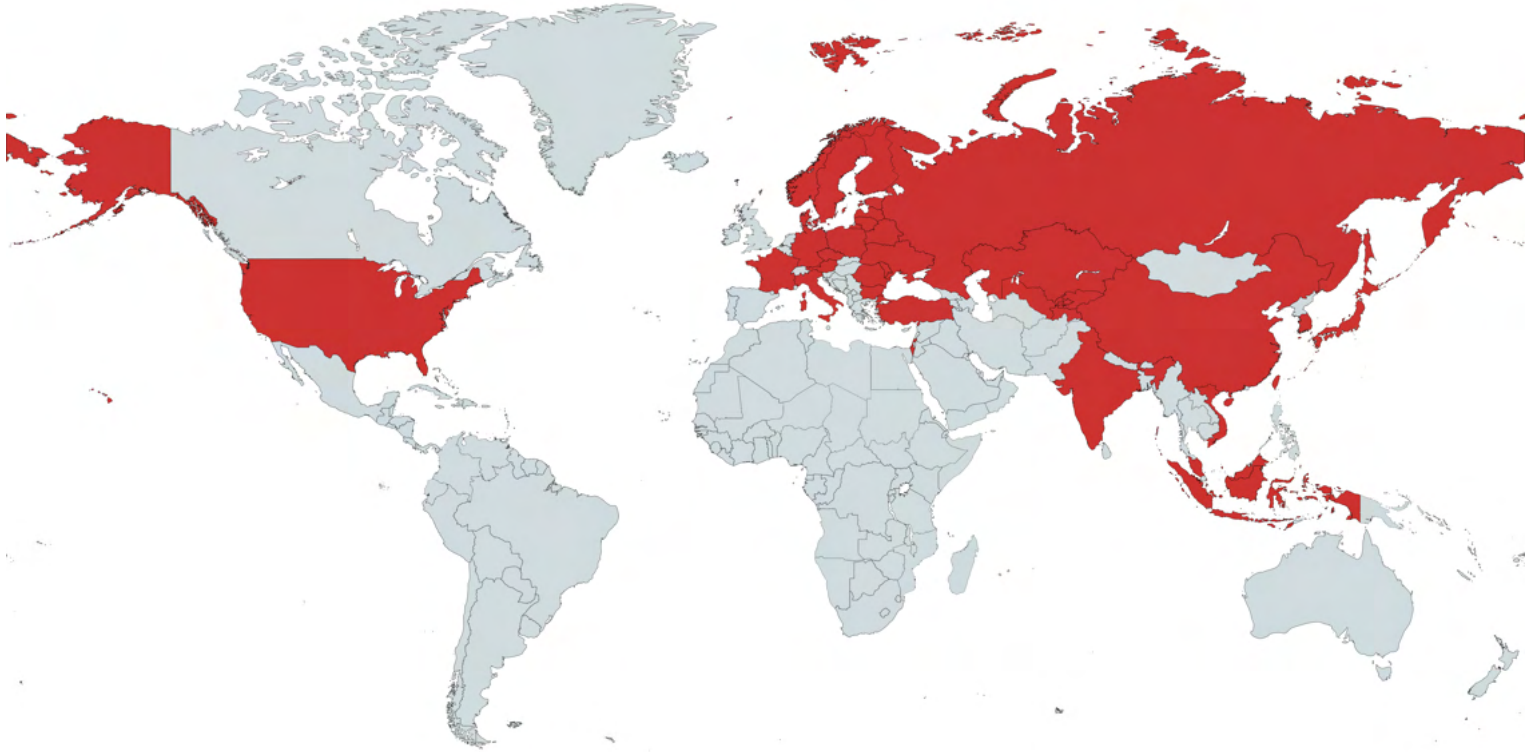
Waveguide Frequency	Nominal Gain (dBi)			
	10	15	20	25
WR90 8.2 GHz – 12.4 GHz	H-A12-W10	H-A12-W15	-	-
WR75 10 GHz – 15 GHz	H-A15-W10	H-A15-W15	-	-
WR62 12.4 GHz – 18 GHz	H-A18-W10	H-A18-W15	-	-
WR51 15 GHz – 22 GHz	H-A22-W10	H-A22-W15	H-A22-W20	-
WR42 18 GHz – 26.5 GHz	H-A26-W10	H-A26-W15	H-A26-W20	-
WR34 22 GHz – 33 GHz	H-A33-W10	H-A33-W15	H-A33-W20	-
WR28 26.5 GHz – 40 GHz	H-A40-W10	H-A40-W15	H-A40-W20	-
WR22 33 GHz – 50 GHz	-	H-A50-W15	H-A50-W20	-
WR19 40 GHz – 60 GHz	-	H-A60-W15	H-A60-W20	H-A60-W25
WR15 50 GHz – 75 GHz	-	H-A75-W15	H-A75-W20	H-A75-W25
WR12 60 GHz – 90 GHz	-	-	H-A90-W20	H-A90-W25
WR10 75 GHz – 110 GHz	-	-	H-A110-W20	H-A110-W25
WR8 90 GHz – 140 GHz	-	-	H-A140-W20	H-A140-W25

RF COMPONENTS & ACCESORIES

Offering many different RF components and accessories, such as mobile antenna stands, phase paired cables, hybrid couplers, fixtures, and more...



DISTRIBUTION NETWORK



New concept for the future
NEXTEM



VESTUR
a u s t u r



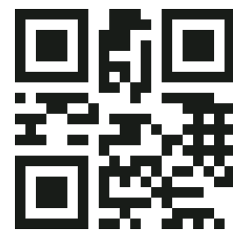
IMPO-RF
Utilized Solutions



FOR MORE INFORMATION



RF SPIN s.r.o.
Na Berance 57/2
160 00 Prague 6
Czech Republic



www.rfspin.com
info@rfspin.com
+420 245 008 847