

Contattateci per maggiori informazioni:

Volta S.p.A.
Authorized Reseller for Italy
Via del Vigneto, 23
39100 Bolzano (BZ) - Italy
Tel.: +39 0471 561 112
Fax: +39 0471 561 210
E-mail: pfi@volta.it
Web: www.volta.it

One supplier for all your marking needs

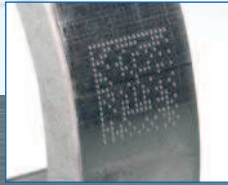
INDUSTRIAL

MARKING AND PRODUCT IDENTIFICATION

www.ostling.com



English Version



Typical application areas:

- Entire automotive sector • Mechanical engineering
- Metals and plastics for the aerospace industry
- Special mechanical engineering • Data Matrix • ID plates

Pin Marking

Tamper-proof, durable, flexible ...

With our PinMark™ Dot Peen marking systems, the mark is created by vertically oscillating a carbide indenting pin, which can be moved along the x and y axes using two stepping motors. This results in a dense series of points, forming an uninterrupted line.

With our PinMark™ marking systems, products with a wide variety of shapes and materials can be permanently and economically marked at high speed. Any text, figures, symbols, or logos can be reproduced. Text can be positioned at any angle or on a curve.

Our Dot Peen systems have been used successfully for many years in the aviation, tooling, automotive, and steel industries. Special characters like digits, logos and 2D codes (Data-Matrix™) can be marked as well.

Strengths of the ÖSTLING PinMark™

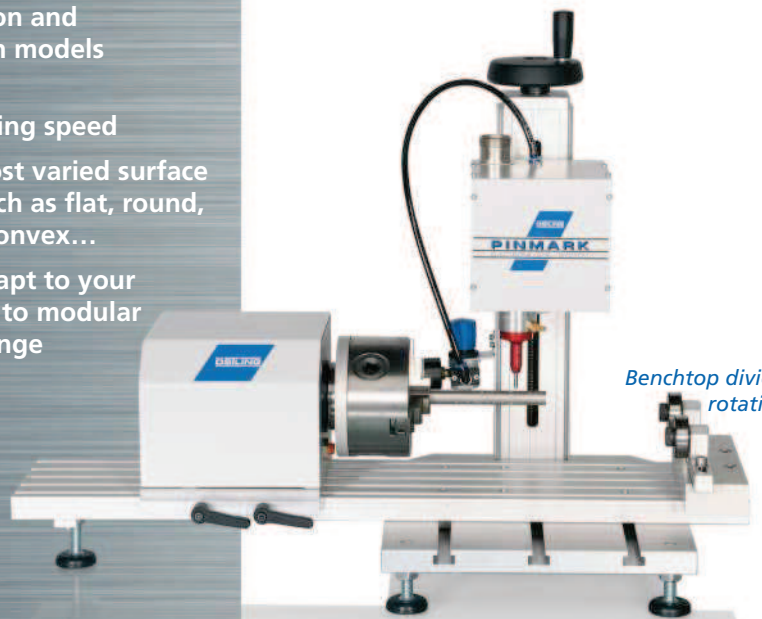
- ▶ Permanent marking on several kinds of materials and shapes
 - ▶ Benchtop, handheld, combination and integration models available
 - ▶ High marking speed
- For the most varied surface shapes, such as flat, round, concave, convex...
- ▶ Easy to adapt to your needs due to modular product range



Hand held PinMark™



PinMark™ Control system



Benchtop device with rotation axis